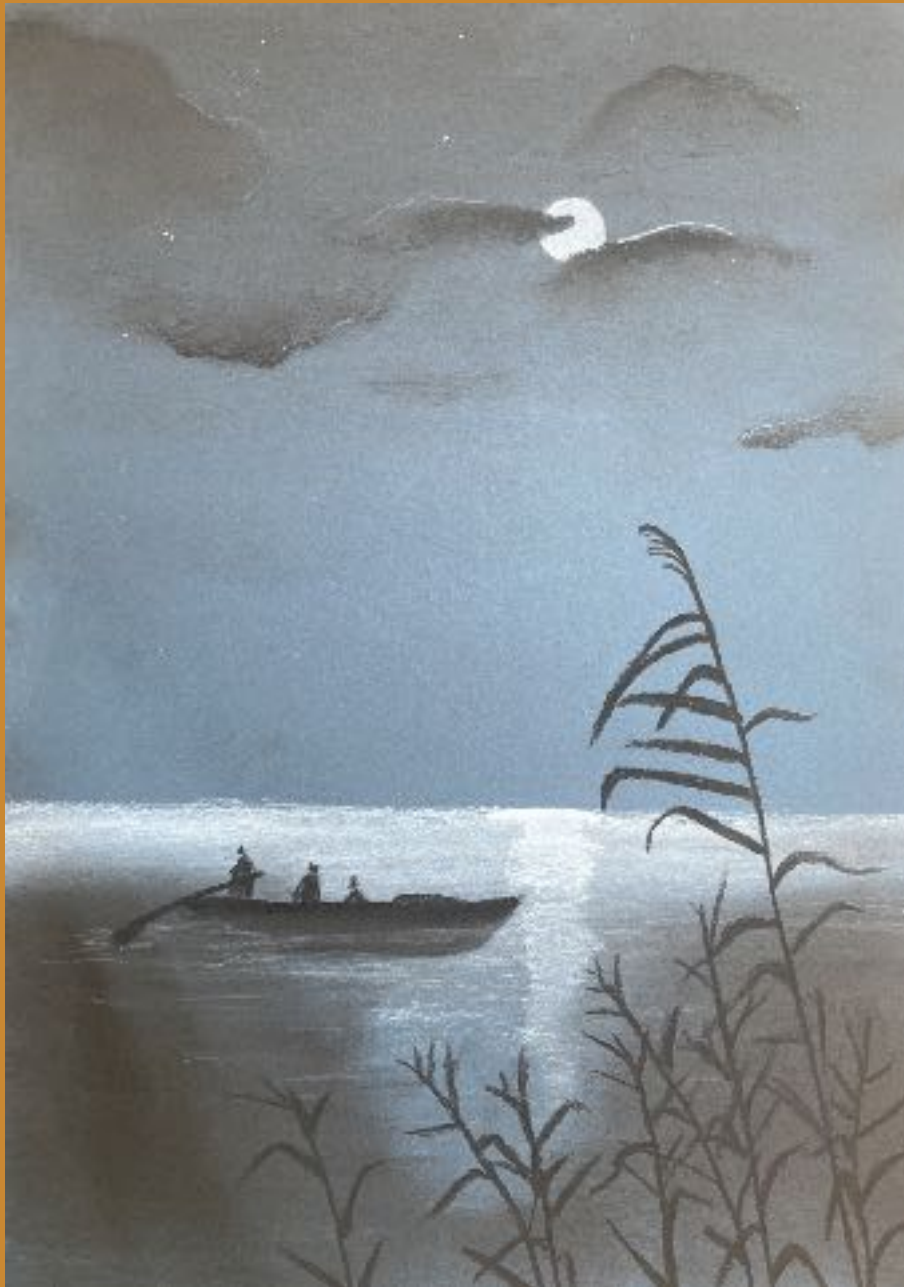


The St Michael Steiner School NEWSLETTER

November 2023



Class 10 Surveying and Ecology Field Trip to Wales

This autumn we had the pleasure to join one of our sister schools, Cardiff Steiner School, on their surveying/ecology field work at Coed Hills in the Vale of Glamorgan. For some of our students this was the first time out of England for a while and as we drove over the Severn Bridge in trepidation we delighted at the unknown ahead of us; the new people to meet, food we would cook, sights we would see and how we would survive 10 nights away from home on a school trip?

Students had already completed a week of ecology lessons in London and they were in process of writing a report to compare their 'birth trees' studied in the grounds at school to others



in the landscape in Wales, how similar and different would their habitats be? Why would this be?

The ups and downs of surveying field work is best shown from students submitted notes on their experiences:



'We were all a bit confused at first even though we had a very thorough explanation from our teachers Roy, Sarah and Jill. But with determination, we proceed.'

'The first time setting up the equipment we put the tripod too low down so all we could see was the grass and not the staff, so we move the tripod a little towards the points and put it up.'

'The first of many obstacles came with a simple question: where should we put the tripod? Ideally, it would be in a place where we could see everything in our area; the compost toilet at the end, the gateposts, the twenty-odd trees, an old solar panel and the curves in the battered road. This didn't seem possible, so we found a spot up by the entrance that satisfied our immediate needs. We knew that later we would have to move the tripod and we did not look forward to it.'

'We had to ensure that all sight lines were level with the ground by using a spirit level [A spirit level is a tool that shows the angle of the surface it's resting on, and is used by adapting the surfaces position, aligning an oval shaped bubble to the centre of a transparent tube in the spirit level]. The dumpy could then be attached and stabilised on the tripod using a screw. At the base of the dumpy are three manoeuvrable nobs that act as a leveller. To check for inaccuracies, there is a built-in spirit level, that is manipulated by the nobs, and is aimed to stay within the centre of an inner circle'



'This time everything went smoothly until we realised we had completely forgotten to measure the angle on any of the points we'd done'

'To our disappointment, the day before we needed to hand in our assessment, we realised that some of our calculations were incorrect. We figured this out as we were writing point N into our data sheet. As the distance seemed much larger than we recalled in real life. So, we went outside to double-check it, and as we suspected it was incorrect. We then realised that we did not know which points were right or wrong. Not wanting to take the risk of drawing our maps with the wrong calculations, we had to start again for the 5th time. So, in the rain, we did our measurements one last time.'

'The map process to me was really easy to get the distances and everything ...after a bit of explaining we all understood how to do it correctly so we started the map again but this time we did it a lot more accurately using our set square and compasses.'

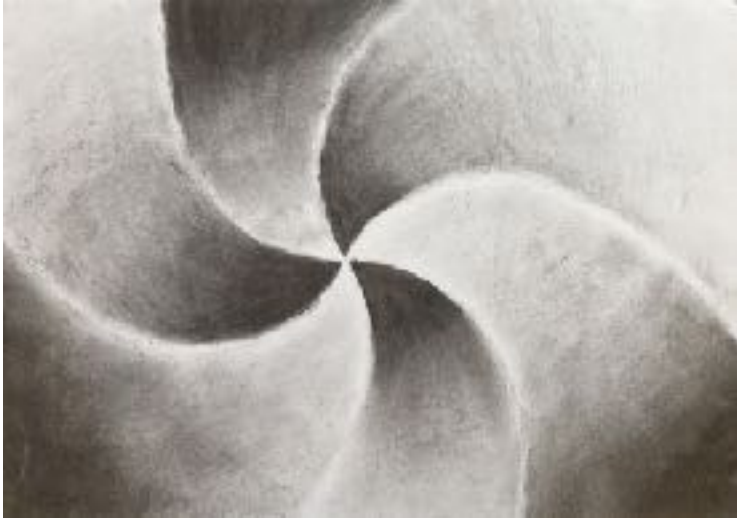
'after we'd attempted it once we realised that something was wrong, so we decided to do it one more time and somehow it worked, after we checked it a few times the reason it didn't work was because someone had read the angle wrong on the data sheet'

'I have learnt so much from surveying and indeed this trip. I learnt competent surveying skills that I enjoyed and hope to use again in the future, I spent a lot of time outside in the beautiful Vale of Glamorgan, I learnt how to cook, but more than anything I learnt how to work hard, and I don't think that can possibly be a bad thing.'

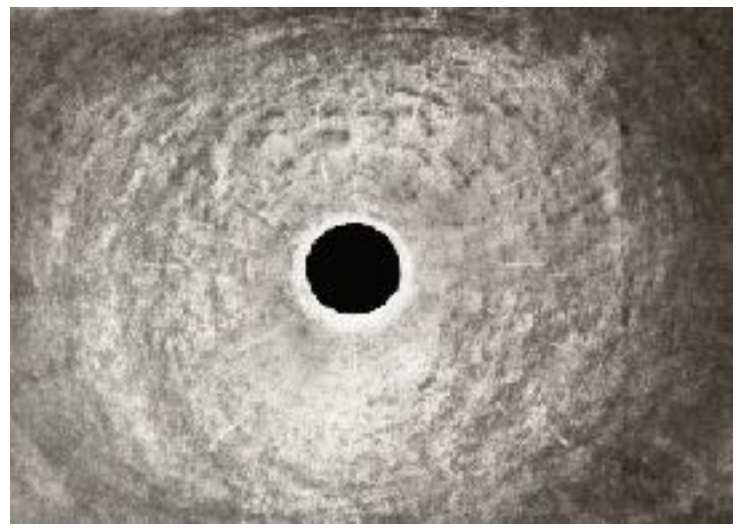
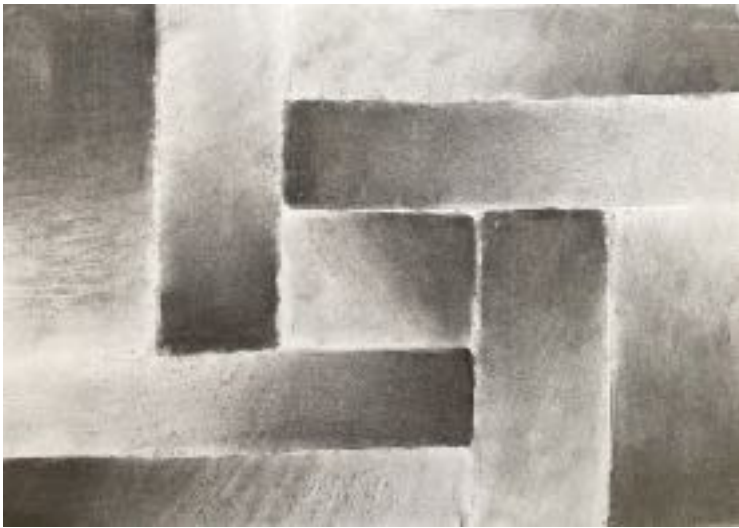
Roy Alllen, Sarah Houghton (and thanks to Jill Baird from Cardiff for the invitation).







**Class 10's Charcoal Drawing
led by Peter Brewin**





ISA Art Competitions

Every year, the Independent Schools Association holds regional and national art competitions. There are different categories, including 2D, 3D, Textiles, Workbooks and Fashion which are divided into age groups. Each school is allowed to enter one piece in each age group in each category.

We entered six pieces of work from Classes 1, 2, 5&6, 10, 11 and 12. In the regional competition (London West) the work from Classes 1, 2 and 11 won first place in their categories (see photos) and went forward to the national competition in Kenilworth on 6th and 7th November. The woven bag and the knitted squirrel from Classes 1 and 2 were placed second and Highly Commended respectively.





CLASS 4

honed their duck herding skills at the Bentley Wood Fair in Sussex earlier in the term.



St. Michael's

Advent Fair

Saturday 2nd December

11.00am - 3.30pm

Candle Dipping

Cakes & Waffles

Homemade Food

Spiced Apple

Books & Clothes

Fire & Damper

Craft Stalls

Advent Spiral

Silent Auction

Tombola & Raffle

Coffee & Tea

& Lots More...

Come & Join us...

St Michael Steiner School

Park Road, Hanworth park, London TW13 6PN

The St Michael Steiner School is a registered charity no 1094960
and a company limited by guarantee no 04364394

Lately in Kindergarten...



Our school has kindly been donated a Christmas tree by Pines and Needles and they would love to offer parents a 10% discount on Christmas trees (up to 7ft) in their pop up stores! Our local pop up stores are located in Kingston (The Hawker Centre, Lower Ham Road) and Richmond (Richmond Athletic Ground, Twickenham Rd).

DISCOUNT CODE: STMICHAEL10

Keep an eye out on Pines and Needles social channels @pinesandneedles for fun activities at our local stores.

Please visit www.pinesandneedles.com for more details and other locations as they are all around London!

