

The St Michael Steiner School

# Newsletter

*June 2021*



The St Michael Steiner School, Park Road, Hanworth Park, London TW13 6PN

[www.stmichaelsteiner.hounslow.sch.uk](http://www.stmichaelsteiner.hounslow.sch.uk)

020 8893 1299 / [info@stmichaelsteiner.hounslow.sch.uk](mailto:info@stmichaelsteiner.hounslow.sch.uk)

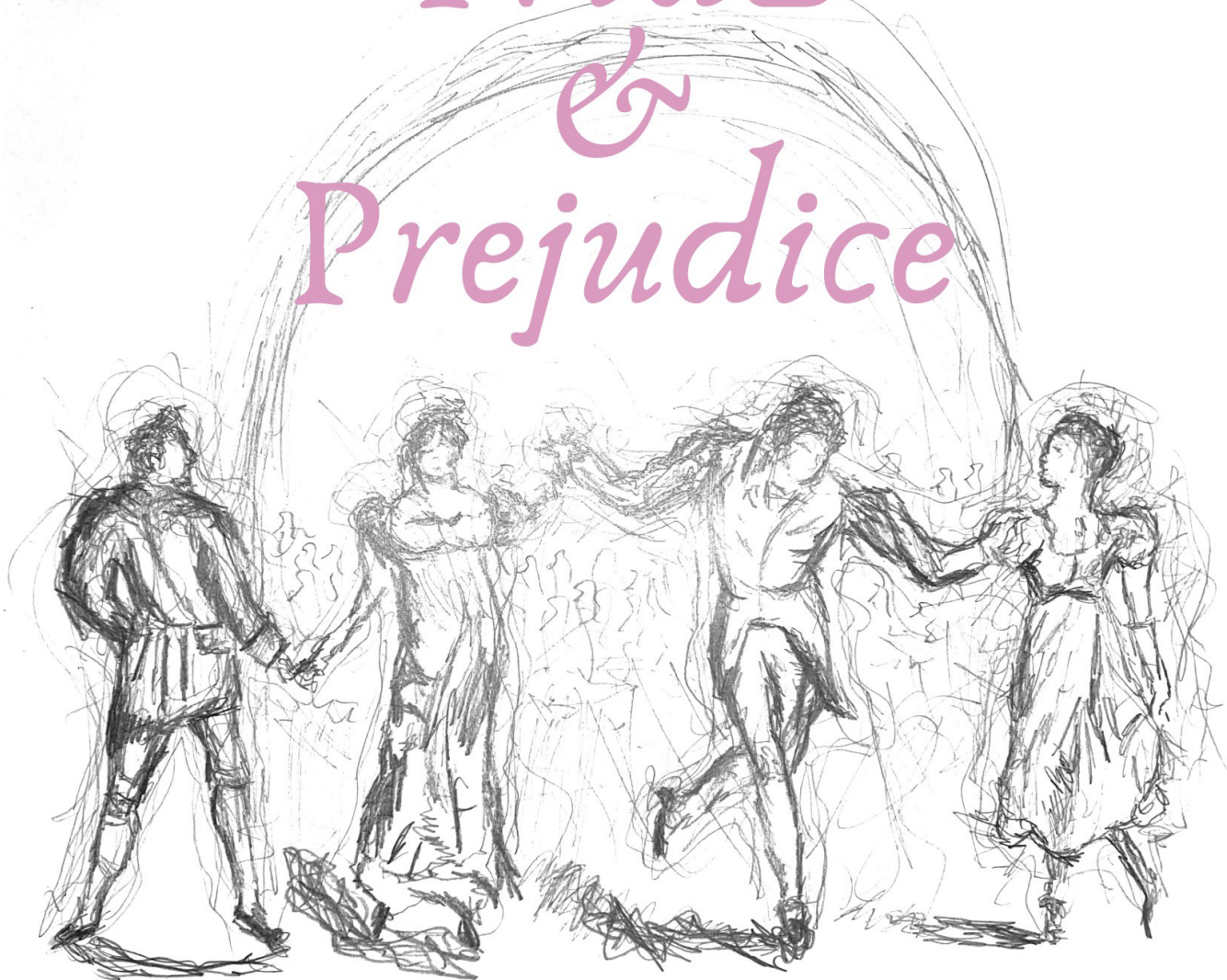
Registered Charity No. 1094960 Company Limited by Guarantee No. 04364394



The St Michael High School presents

Jane Austen's

# Pride & Prejudice



Saturday 3<sup>rd</sup> July, 5pm

Monday 5<sup>th</sup> July, 11am\* & 6pm

In the courtyard at The St Michael Steiner School

Tickets: £6 each, or a pair for £10. To book email: [prideprejudice@stmichaelsteiner.com](mailto:prideprejudice@stmichaelsteiner.com)

**NO ENTRY WITHOUT BOOKING.**

\* School performance—for students & teachers only.

The St Michael Steiner School is a registered charity: no. 1094960

# Class II sonnets

For the past two weeks those of you lucky enough to be at school may have observed Class II students scattered around the grounds, some lying on the grass, others leaning out of windows, and a few even in the branches of trees. The task that brought them to these strange lesson poses? They have been writing sonnets from close observation of nature.

Sonnets are often described as the most difficult poetic form, and many writers struggle to produce them. And yet there is barely a poet from the last five hundred years who has not been drawn to at least attempt the form. The difficulty lies in several aspects: first of all, despite its fame, iambic pentameter—the meter in which almost all sonnets are written—is difficult. In English we seem more drawn to write in trimeter (three feet per line) or tetrameter (four feet per line), so reaching for that fifth foot is a challenge. There are also many different sonnet forms, but Class II were required to choose from only two: Petrarchan—which has an ABBAABBACDCDCD rhyme scheme—or Shakespearean—in which the rhyme scheme is ABABCDCDEFEFGG. As you can see both of these forms have 14 lines, which in itself is difficult: it is contained enough so as not to present too daunting a task, and yet once immersed in ones subject, 14 lines can feel restrictive. But the biggest challenge is in the content: sonnets are poems that ask writers to look both out at the world and inward to their own feelings, at the same time. Although nature may appear to be the common subject, it is almost always a metaphor for emotions, or big philosophical ponderings. And as if this was not already enough, they must include a turn: a moment, after the eighth line, in which the tone and feeling of the poem changes, often from a mood of difficulty, to one of harmony, leading to the final resolve.

Although every student in Class II struggled with this task, they rose to the challenge—some far exceeding my expectations—and it is with great pleasure I am able to share with you just a handful of the beautiful poems they produced.

Stella Ottewill





Summer Sonnet *by Fernando Coxon-Aristizabal*

Oh, how you change o'ernight so black and white.  
 You change from blue to grey, it's such a shame  
 And Clouds so pale snuffed out they lose the light  
 But sky like seas of blue so clean and plain  
 Can give the happiness we look upon  
 As sun shines bright on this gold summer's day.  
 For spring has come to close and days are long  
 But time is nigh for in the past was May  
 And tis the season for us all to grow.  
 As long grass blows and sways upon the breeze  
 All creatures of the grass begin to show.  
 The singing birds fly up to perch in trees  
 And songs of summer ring across the land.  
 This time of year, is truly the most grand.

Sonnet *by Sophie Poll-Hulshoff*

Like woven tapestry it hangs so high  
 A veil of silk a blanket of bright light  
 A glisten and shine and specks of dazzling white  
 Reflecting the beams way up in the summer sky,  
 It's watching waiting while still ever so sly  
 While fragile and light it stretches so very tight  
 And in the breeze it grips the bark with might  
 So it can seize every poor little fly,  
 But in the dark shadows it stays concealed  
 To blend into the hues of brown and green  
 Only to me it's now clearly revealed  
 To others it is still yet to be seen,  
 Many a time I have wandered this field  
 Now I know right here it has always been.



All things to come and see *by Pearl Kelly*

I wish the strains of time did not just visit,  
 And through the morning fog she'd hear my call.  
 Oh gentle bud please savour this! You're all.  
 Mark my word one day you'll surely miss it.  
 It matters not the rawness of your spirit,  
 And nor the empty sting of pressures maul,  
 Your thoughts and feelings me some day enthrall  
 So tender now to be is not illicit.  
 So please! These years of limbo do not waste  
 Fret not on jealous thoughts and tearful glee.  
 Your pangs and doubts within your mind encased  
 Rake nought gainst all the things to come and see.  
 Stay here awhile think not and make no haste,  
 Oh budding bloom for now just simply be.



When it's raining *by Rose Dowsing*

When drudging sludge looms on the gritted sand,  
 My splintered bones sink to the trodden ground,  
 Yet my conundrum'd heart retains its pound  
 As burdened cloud churn through the wearied land.  
 For when the torrent of the rain has panned,  
 Once swollen skies whine as the wildness drowned,  
 The cumber falls and lightness flaunts its sound,  
 A captured still, all primitive and canned.  
 For what is day without the darkened night?  
 Does joy spur once the sadness has been reaped?  
 The bounty of the harvest does delight,  
 Yet only from the dormants of the sleep.  
 So I embrace the tempest of sheer fright,  
 When floods relent to drought, I'll cease to weep.

Sonnet *by Daniel Waring*

Could I compare ones soul to burning flame?  
Or sweet bright star amongst the deep dark sky,  
For I alone in thoughtfulness do lie  
Perchance I could compare myself the same.  
I do not search for pity nor for shame,  
I see myself and turn away to sigh  
But deep inside my being shall not cry  
For life has more to give and not so lame.  
Oh tortured mind outclassed by joy and love,  
Roar on through inner silence shunned by fear,  
For mindless stones do bruise but not above.  
The clouds inside my head are not so queer  
As darker thoughts don't fly like sweet white dove.  
The sun does glow inside the cave my dear.





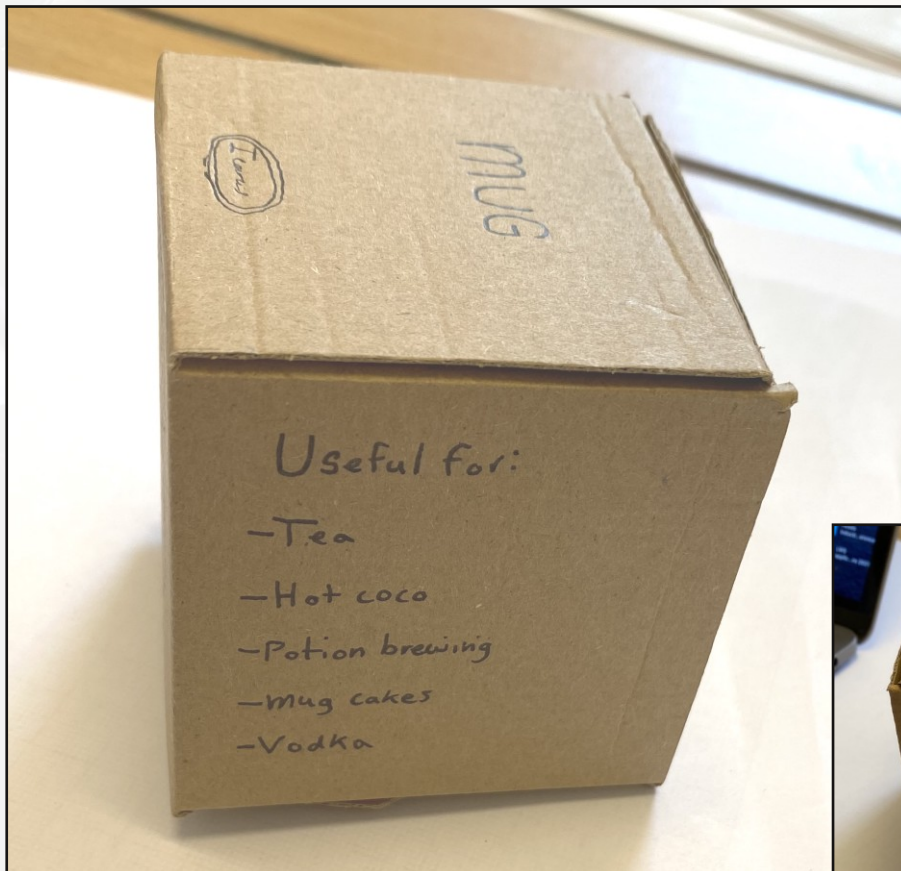
# School trips

*Class 8's woodland stay  
and Class 6's visit to Stonehenge*





## Class 9 Packaging project

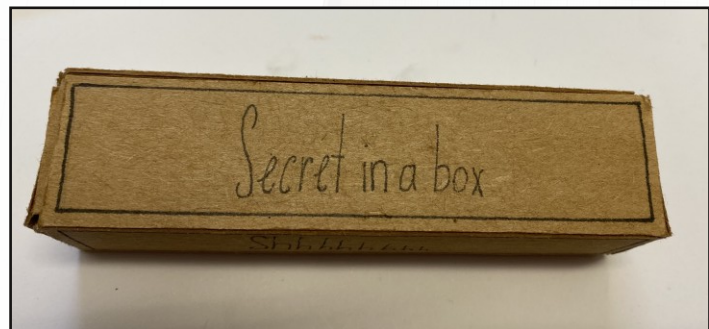
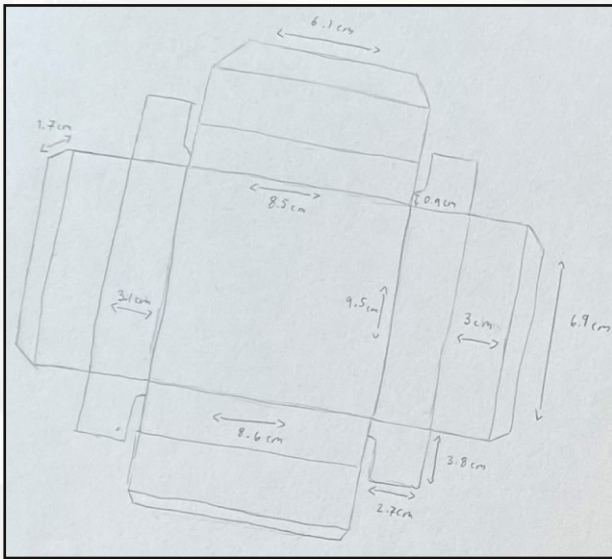


In this 5-day intensive we looked at packaging designs, evaluated them, made new ones using different measurements and designed some for specific contents, including a very heavy crystal sphere, a set of coloured pencils and a tube of green oil paint. The lessons include calculating volume, capacity and dimensions, deciding on proportions and relating the design and structure of packaging to its contents and purpose, for example, is it purely functional or do we want to sell it? If so, does it have to look appealing? If so, who should it appeal to? We also talked about the cost of cutting, constructing and transporting goods and tried to make our packaging economical.

Here is some of the students' work.

*Amanda Bell*







# Rehearsals for Class 7's recent play *The Sacred Flame*







Dear School Families,  
We are so excited to be able to let you know that there will be a:

## Midsummer Market

on Saturday 26.6.21

from 11-4pm

in the grounds of our school

*In the beautifully decorated gardens you will find mouthwatering BBQ and salads, your favourite cakes, best coffee and tea, refreshing ice lollies, joyful games and flower crown making, a midsummer fire inviting you to offer up your wishes and releases to the flames, bespoke artistic Henna decorations, an array of second hand books and clothes to choose from, the ever popular tombola and lucky dip, a raffle of special treats and much more!*



All are welcome to join the litter picks on Hanworth Park. The next litter pick just so happens to be the same day as our Summer Market - so this would be a great time for families to help out on the park a little bit. A half hour pick works wonders!

Contact Sarah Houghton for more details or go to school near rugby club to borrow a litter picker and grab a bag.

## Wooden garden benches made to order (by Class 9)

Class 9 will be making wooden benches in their Craft block for the last 4 weeks of term. They will make some new ones for the school grounds, and once they have mastered the design and construction, they will make them to order, to raise money for the school.

The benches are very sturdy and durable (the ones Class 9 made in 2015 are still going strong, even though they are moved around, stood on and climbed on every day). They are made of treated construction timber, which we sand and finish with wood preservative. This one - made in 2017 - is by the entrance, if you want to have a look.

If you would like to order one, please contact [amandabell@stmichaelsteiner.com](mailto:amandabell@stmichaelsteiner.com)

Alternatively, you could sponsor one for the school, in which case we will mark it with your name.

Order one: £90

Sponsor one: £45





# Community, notices and adverts

*Please note that the school does not endorse or recommend, either in general or in particular, anything offered in the community pages and readers are advised to check the qualifications of practitioners or people offering services here.*

For advice and support during the pandemic

*Anna Freud National Centre for Children and Families:* [www.annafreud.org](http://www.annafreud.org)  
offering seminars, courses and support to families on mental health.

*Hand-in-Hand Parenting:* [www.handinhandparenting.org](http://www.handinhandparenting.org)  
resources for parents to read, listen, watch and courses on Aggression, Sleep, Setting Limits,  
Parents' Stress, Siblings, and Separation

*Beginning Well:* [www.beginningwell.com](http://www.beginningwell.com)  
holistic support for parents of young children

## Looking for a baby-sitter?



My name is Rose. I'm a 17 year old student currently attending The St Michael Steiner School and I have been in Steiner education since kindergarden. I love children, and I am dependable and responsible when it comes to work. I am currently looking for babysitting jobs for Friday evenings and the weekend. Rates are negotiable, I am happy to look after children of any age, and can travel within reach of the Richmond area.

Contacts - you can text me at

+44 07432 582 320

or send me an email at

[rose.dowse@outlook.com](mailto:rose.dowse@outlook.com)

## Children's Summer Camp

*An initiative of The Christian Community in Stroud, Glos.*

*For children from 8 to 14 yrs of age of all backgrounds*

**17<sup>th</sup> – 27<sup>th</sup> July 2021**

**Colin Godman's Farm, Furners Green near Forest Row, Sussex**

Games, Singing, Art and Craft projects,  
Organic Farm food, Treasure Hunt, Hiking,  
Improvisation, Swimming...

Creating experiences for children where they can most wholly and truly be themselves. Every child is precious and has something important to bring to the world, regardless of their apparent challenges.

Aaron Mirkin 01453 299311

Iona Charter 07554 728135

Dominic Corbett 07523 862811

Phileighda Finch 07432 465956

[cc.camps.stroud@gmail.com](mailto:cc.camps.stroud@gmail.com)

[WWW.CC-CAMPS.ORG](http://WWW.CC-CAMPS.ORG)

## HILL TRIBE 2021

**A new 'Rites of Passage' programme for 12-16 year olds. 3rd - 9th August 2021**

<https://www.onthehill.camp>



# EURYTHMY RETREAT

with Michèle Hunter  
21<sup>st</sup> - 23<sup>rd</sup> August 2021

PEREDUR CENTRE FOR THE ARTS  
East Grinstead, RH19 4NF

Exploring the 4 elements: Fire, Air, Water and Earth.  
Embodying their qualities and bringing them into  
expression through ensouled movement.

No experience necessary but all levels welcome.

Michèle Hunter: [mhunter1life@gmail.com](mailto:mhunter1life@gmail.com) / 07947 040554

**Residential rate:** £300 including workshops and 2 nights' accommodation. **Early bird rate:** (before 21<sup>st</sup> July): £260 Non-residential also possible.

## EURYTHMY RETREAT 21st to 23d August 2021

In working and moving meaningfully together through creative expression:

- We can re-discover ourselves and reconnect with our 4-fold nature,
- We can re-connect to the elements in a way that brings meaning, deepens our relationship to and our understanding of them and their roles in our lives.
- We can find a connection between the elements and the temperaments of our children to understand them more deeply.
  - We can grow consciousness.
  - We can improve our relationship to self and others.
  - We can work from chaos, through the heart, to resolution.
  - We can strengthen our immune systems and increase resilience.
- We can tap into our body's divine wisdom, and through this Silent Master, move closer to our Higher Truth.

Eurythmy brings us into creative expression which can help lead us to our Higher Self. When we connect to our Higher Self, we then begin our journey towards and enter our Higher Purpose in the world.

Much needed today! Through this retreat, we can begin that journey.

I look forward to seeing you there.  
Michèle



# COMMUNITY LITTER PICK EVENTS IN HANWORTH PARK



Organised by Friends of Hanworth Park House  
and  
Hounslows Environmental Champions

Supported by  
Feltham Rugby Club &  
Cartier Printers

**SATURDAY 26th JUNE 11-1pm**  
litter pick with a focus on Mental Health

**SATURDAY 10th JULY 11-1pm**  
litter pick & take pictures of the park mini competition

**SATURDAY 21st AUGUST**  
11-1pm litter pick & 1-3pm BBQ at Feltham Rugby Club  
Celebrate & enjoy food, music & drinks. Prices apply.

Covid Government guidelines on outdoor activities apply

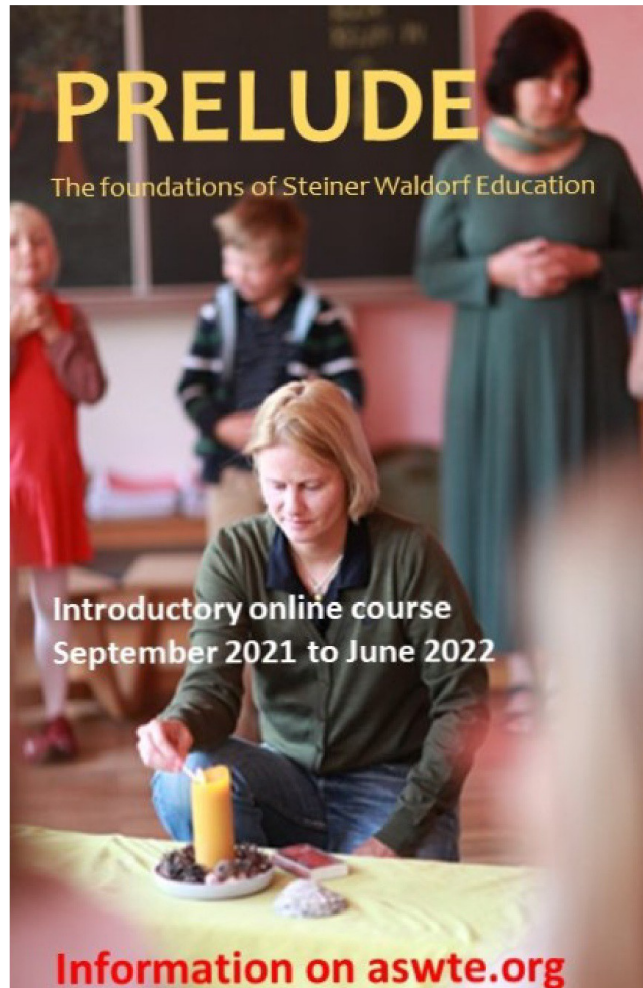
**Meet in Feltham Rugby Car Park  
Hanworth Airpark, Park Road,  
Feltham, TW13 6PP**



**Litter pickers, gloves and hand sanitiser available**

**Wear clothes & footwear relevant to the terrain and weather**

**Toilets & Refreshments provided**  
**All ages welcome, children to be accompanied & will  
receive a certificate**



**PRELUDE:** a 30-week on-line introduction to Steiner-Waldorf education

Are you a trustee, parent, former student, home-schooler, aspiring teacher, support staff, or just plain curious and wanting to know more about this unique education?

A new opportunity to join *Prelude* in September `21, following the success of our `20-`21 programme.



Last year Prelude reached over 100 people, from eight different countries, across 30 sessions, with presentations from a wide range of experienced Steiner Waldorf practitioners. This is what some of our Participants have to say about the course:

*‘A veritable smorgasbord of presentations by passionate professionals. An inspiring affirmation of the depth and the breadth of Steiner education.’* (E.W. Steiner-Waldorf Teacher)

*‘This course has taught me so much about the foundations, content and modern application of the SW curriculum that I feel 100% sure it is the system that I want my children raised in. The influence has been so profound that I am now taking up the teacher training course for myself and my children.’* (N.T. Home Schooler)

*‘Prelude is a fascinating and well-rounded exploration of how Waldorf education works, both philosophically and practically. The presenters are warm-hearted and intelligent, the information well-organised and easy to follow, yet deep. I would highly recommend this course, which has greatly broadened my understanding of Waldorf education. Thanks for a great experience!’* (S.S. Parent).

*‘Thank you for a great school year full of wisdom. Truly appreciated by many. You have masterfully managed to deliver many significant talks in a very community-like environment, which is very refreshing.’* (L.B. Parent)

Annual subscription: £295 for all 30 sessions. £20/ per individual session.  
Group, school and CPD Discount available.

Weekly Monday evening sessions with inspirational tutors and speakers, including:

Sven Saar \*\*\* Ann Swain \*\*\* Martyn Rawson \*\*\* Jill Tina Taplin

Martin Hardiman \*\*\* Trevor Mepham \*\*\* John Burnett

For more information go to [www.aswte.org](http://www.aswte.org)

CONTACT: [alan.swindell@aswte.org.uk](mailto:alan.swindell@aswte.org.uk)

ASWTE is the member organisation for Steiner Waldorf Teacher Education Courses in the UK